

1020 GROVE STREET
EVANSTON





PROPERTY INFORMATION AND DETAILS

Located in vibrant downtown Evanston, Ten Twenty Grove, owned and operated by Presbyterian Living and Westminster Place, is a senior living rental community designed for adults aged 62 and older who want to enjoy the very best of independent living. Here, residents are part of a dynamic, welcoming atmosphere of individuals who value connection, opportunity, and freedom from the demands of homeownership.

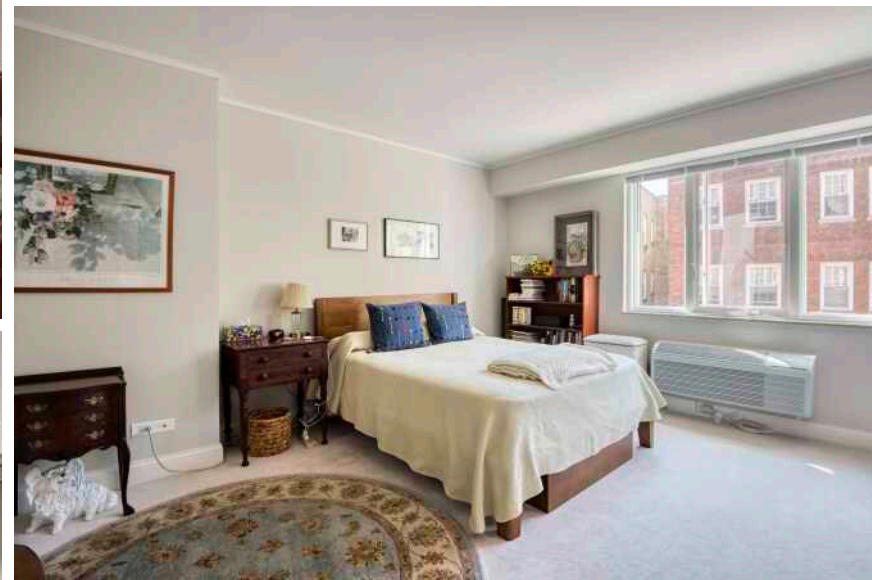
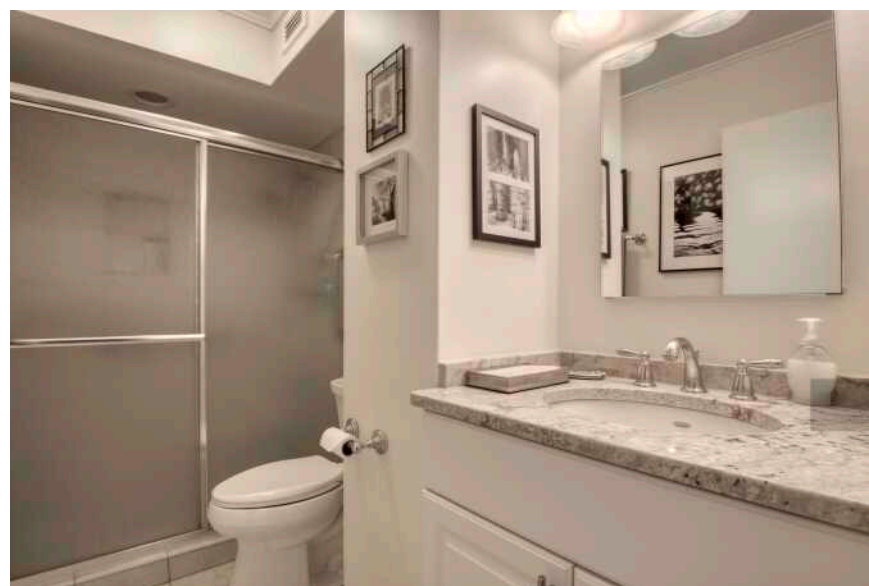
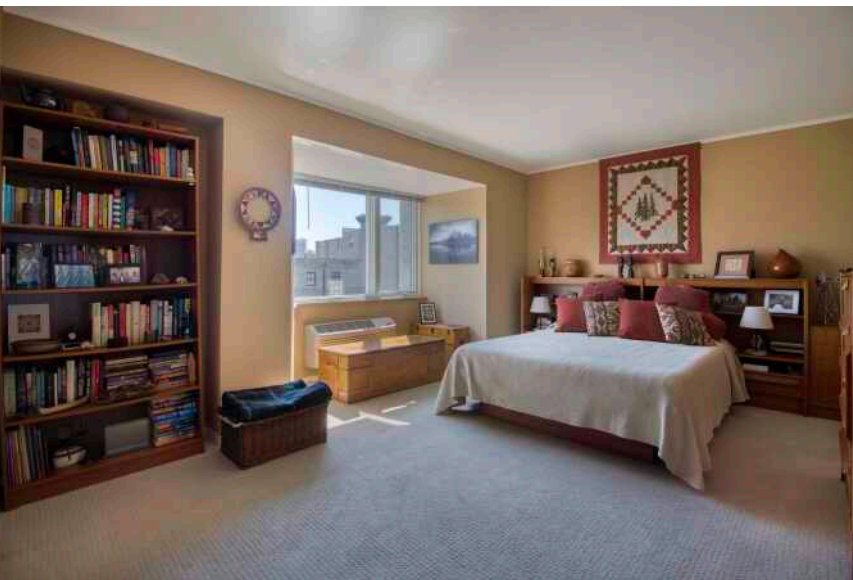
Life at Ten Twenty Grove offers more than just a place to live – it's a lifestyle. Residents are active, engaged and enjoy the convenience of city living along with the comfort and security of a thoughtfully designed home.

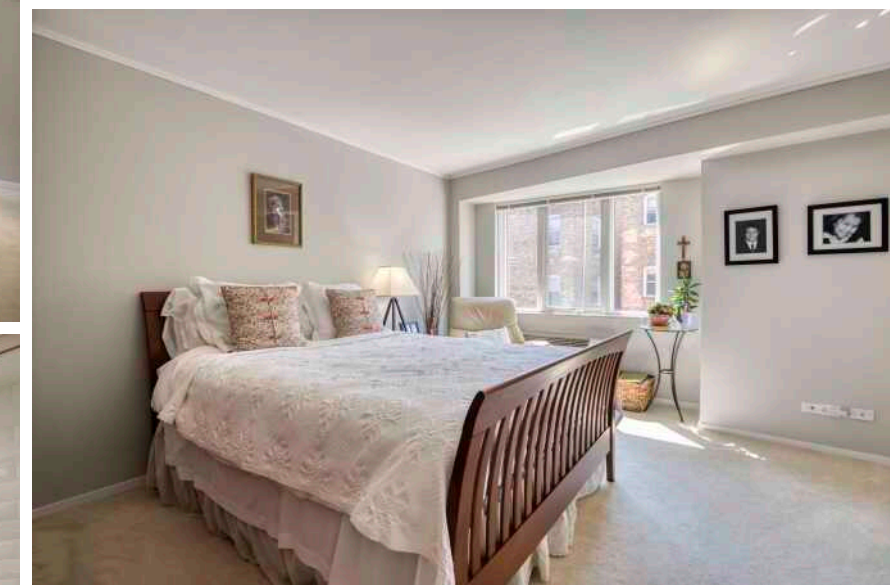
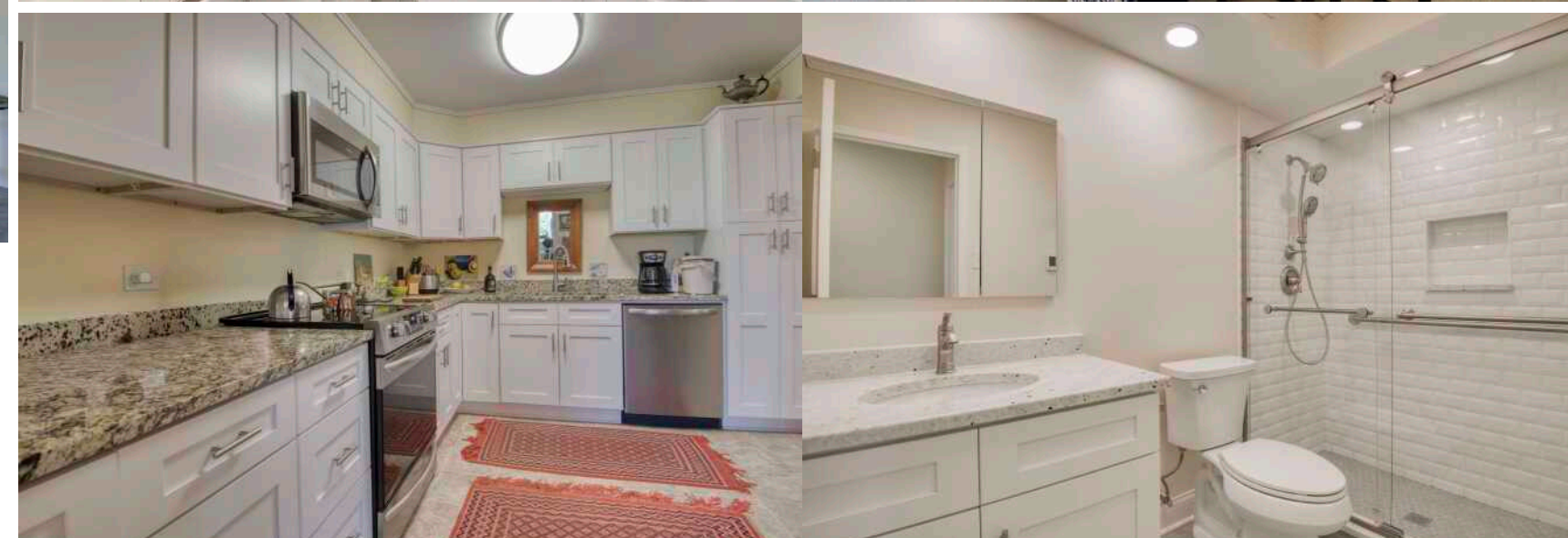
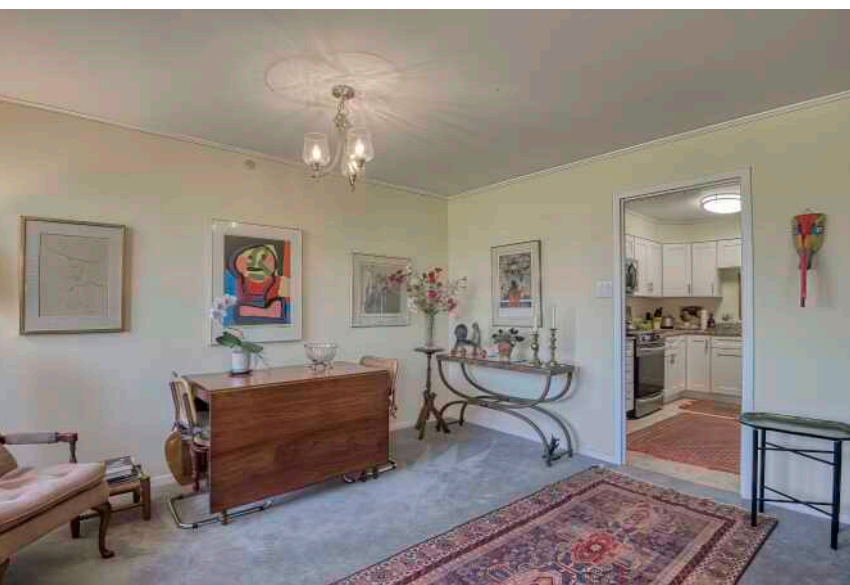
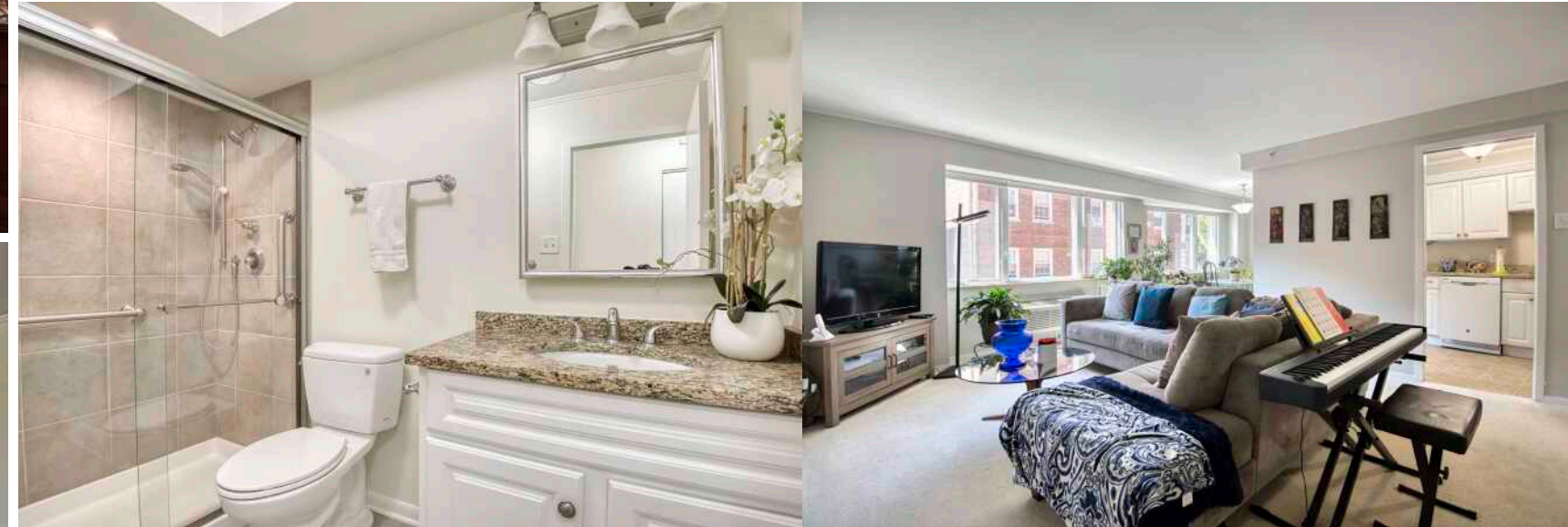
Enjoy proximity to downtown Evanston's shops and restaurants, the beauty of Lake Michigan, and the excitement of Chicago – all just minutes away. At Ten Twenty Grove, you'll discover a maintenance-free lifestyle that lets you focus on what matters most: living well, staying active, and being part of a vibrant, like-minded community.

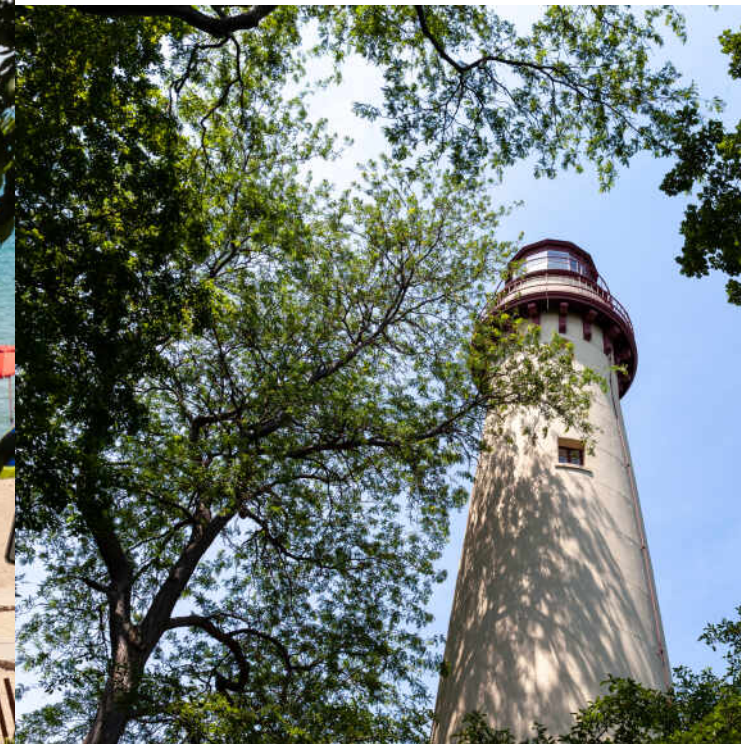
Spacious one- and two-bedroom apartments (700-1,400 sq. ft.) features:

- Newly remodeled interiors
- Heated bathroom floors
- Gorgeous kitchens with stainless steel appliances
- Garage and covered parking
- 24-hour security
- Fitness and business centers
- Outdoor courtyard

1 AND 2 BEDROOM
1.5 BATH







LOCATED JUST NORTH OF CHICAGO, **EVANSTON** OFFERS A BEAUTIFUL NATURAL SETTING ON THE SHORES OF LAKE MICHIGAN.

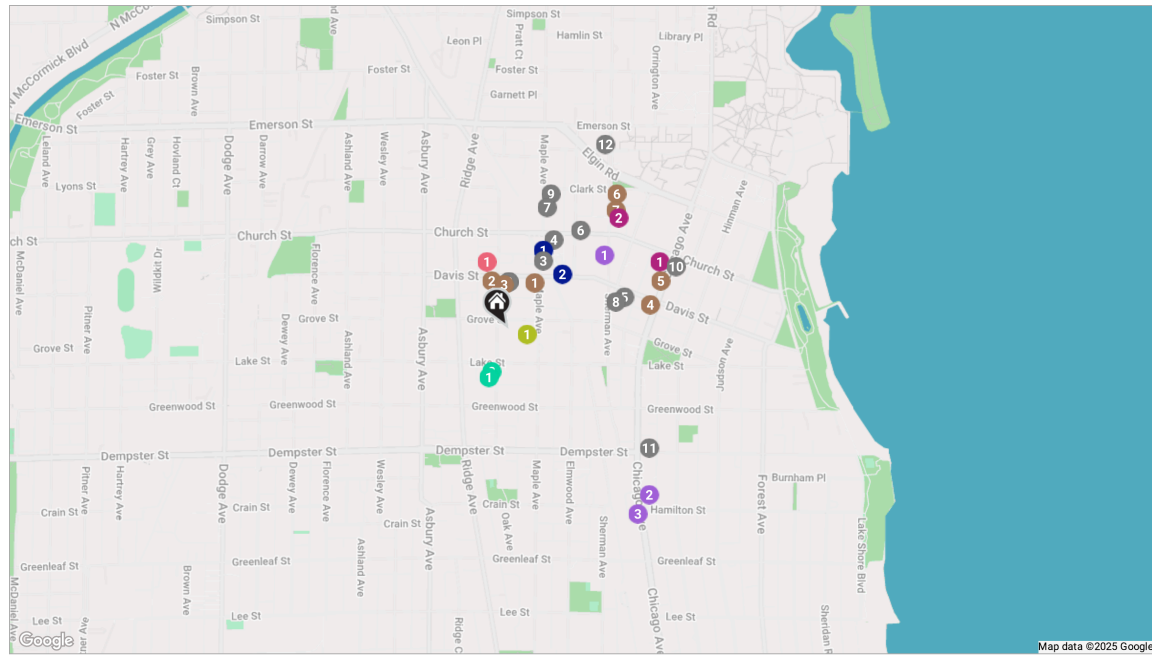
Its historic homes, tree-lined streets, and sprawling beaches may be the first things that catch your eye, but there's a lot more to love here.

Home to world-class Northwestern University, Evanston residents have plenty to cheer about - from watching Big Ten sports and enjoying cultural events to exploring academic pursuits.

The thriving downtown district includes bookstores, boutiques, galleries, theaters, and restaurants that attract city dwellers and suburbanites alike, while outdoor enthusiasts enjoy the many nature paths, parks, and public beaches the community offers.

Evanston boasts a variety of homes in a wide range of styles and price points. You can find everything from stately historic mansions along the lakefront and well-maintained single-family homes on tree-lined streets, to contemporary townhomes and newer high-rises that are near local shops and restaurants.

Residents have several convenient options to commute to downtown Chicago including the CTA's Purple Line and bus routes, as well as Pace bus routes and three Metra stations



RESTAURANTS

- 1 Lulu's
1026 DAVIS STREET C, 0.1 MI
- 2 Taco Diablo
1026B DAVIS STREET A, 0.1 MI
- 3 Alcove - Evanston
1625 MAPLE AVENUE, 0.2 MI
- 4 Noodles and Company
930 CHURCH STREET, 0.2 MI
- 5 Koi Fine Asian Cuisine & Lounge
624 DAVIS STREET, 0.3 MI
- 6 Le Peep Evanston
827 CHURCH STREET, 0.3 MI
- 7 Cozy Noodles & Rice
1741 MAPLE AVENUE, 0.3 MI
- 8 Trattoria Demi
1571 SHERMAN AVENUE STE 1, 0.3 MI
- 9 Chili's Grill & Bar
1765 MAPLE AVENUE, 0.3 MI

COFFEE

- 10 Prairie Moon
1635 CHICAGO AVENUE, 0.4 MI
- 11 Blind Faith Cafe
525 DEMPSTER STREET, 0.4 MI
- 12 Lou Malnati's Pizzeria
1850 SHERMAN AVENUE, 0.5 MI
- 1 Bennison's Bakery
1000 DAVIS STREET, 0.1 MI
- 2 Berry Pike Cafe
1100 DAVIS STREET, 0.1 MI
- 3 Philz Coffee
1030 DAVIS STREET, 0.1 MI
- 4 Pâtisserie Coralie
600 DAVIS STREET, 0.3 MI
- 5 Peet's Coffee
1622 CHICAGO AVENUE, 0.4 MI
- 6 Einstein Bros. Bagels
1745 SHERMAN AVENUE, 0.4 MI

SHOPPING

- 7 Unicorn Cafe
1723 SHERMAN AVENUE, 0.4 MI
- 1 Whole Foods Market
1640 CHICAGO AVENUE, 0.4 MI
- 2 CVS
1711 SHERMAN AVENUE, 0.4 MI
- 1 Target Grocery
1616 SHERMAN AVENUE, 0.3 MI
- 2 Trader Joe's
1211 CHICAGO AVENUE, 0.5 MI
- 3 Jewel-Osco
1128 CHICAGO AVENUE, 0.5 MI

GYM

- 1 McGaw YMCA
1000 GROVE STREET, 0.0 MI

ENTERTAINMENT

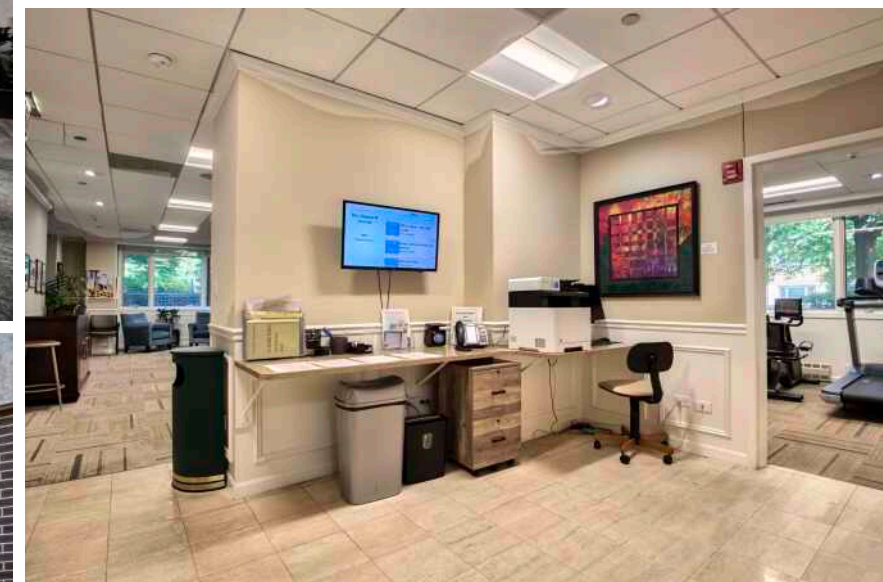
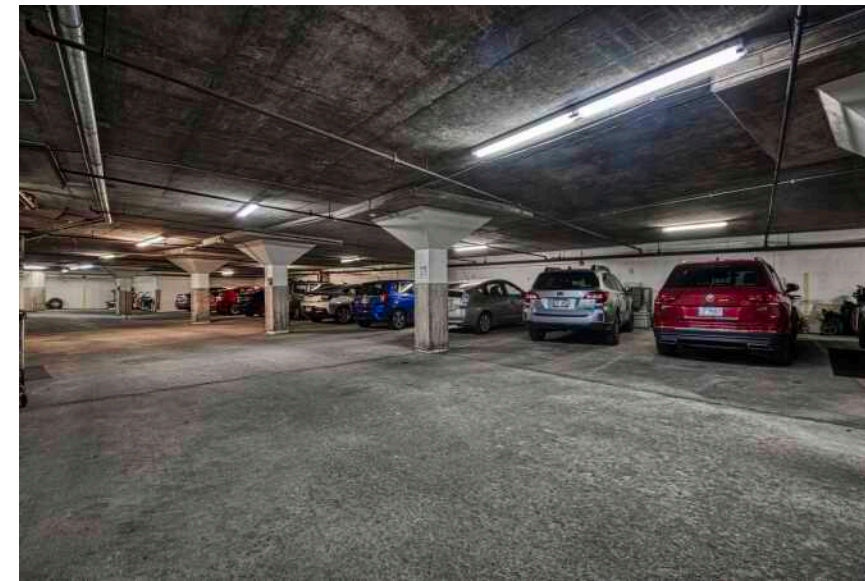
- 1 United States Postal Service
1101 DAVIS STREET, 0.2 MI

TRANSIT

- 1 Davis St
METRA - UNION PACIFIC NORTH, 0.2 MI
- 2 Davis
CTA - PURPLE LINE, 0.2 MI

PARKS

- 1 Merrick Park
OAK AVENUE, 0.1 MI
- 2 Merrick Rose Garden
1426 OAK AVENUE, 0.1 MI





ZOË CARNE

773-255-5306

ZOE@ATPROPERTIES.COM